

**BALDOR® • RELIANCE** 

**Product Information Packet**

**M1707T**

**3/1.5HP, 1725/850RPM, 3PH, 60HZ, 184T, 3640M**

Part Detail							
Revision:	V	Status:	PRD/A	Change #:		Proprietary:	No
Type:	AC	Elec. Spec:	36WG675	CD Diagram:	CD0011	Mfg Plant:	
Mech. Spec:	36A001	Layout:	36LYA001	Poles:	04/08	Created Date:	
Base:	RG	Eff. Date:	01-23-2020	Leads:	6#16		

Specs			
Catalog Number:	M1707T	Insulation Class:	F
Enclosure:	TEFC	Inverter Code:	Not Inverter
Frame:	184T	KVA Code:	K
Frame Material:	Steel	Lifting Lugs:	Standard Lifting Lugs
Output @ Frequency:	3.000 HP @ 60 HZ	Locked Bearing Indicator:	No Locked Bearing
	1.500 HP @ 60 HZ	Motor Lead Quantity/Wire Size:	6 @ 16 AWG
Synchronous Speed @ Frequency:	1800 RPM @ 60 HZ	Motor Lead Exit:	Ko Box
Voltage @ Frequency:	460.0 V @ 60 HZ	Motor Lead Termination:	Flying Leads
XP Class and Group:	None	Motor Type:	3640M
XP Division:	Not Applicable	Mounting Arrangement:	F1
Agency Approvals:	UR	Product Family:	General Purpose
	CSA	Pulley End Bearing Type:	Ball
Auxillary Box:	No Auxillary Box	Pulley Face Code:	Standard
Auxillary Box Lead Termination:	None	Pulley Shaft Indicator:	Standard
Base Indicator:	Rigid	Rodent Screen:	None
Bearing Grease Type:	Polyrex EM (-20F +300F)	Shaft Extension Location:	Pulley End
Blower:	None	Shaft Ground Indicator:	No Shaft Grounding
Current @ Voltage:	4.200 A @ 460.0 V	Shaft Rotation:	Reversible

<b>Design Code:</b>	-	<b>Shaft Slinger Indicator:</b>	No Slinger
<b>Drip Cover:</b>	No Drip Cover	<b>Speed Code:</b>	2S-1W-CT
<b>Duty Rating:</b>	CONT	<b>Motor Standards:</b>	NEMA
<b>Electrically Isolated Bearing:</b>	Not Electrically Isolated	<b>Starting Method:</b>	Direct on line
<b>Feedback Device:</b>	NO FEEDBACK	<b>Thermal Device - Bearing:</b>	None
<b>Front Face Code:</b>	Standard	<b>Thermal Device - Winding:</b>	None
<b>Front Shaft Indicator:</b>	None	<b>Vibration Sensor Indicator:</b>	No Vibration Sensor
<b>Heater Indicator:</b>	No Heater	<b>Winding Thermal 1:</b>	None
		<b>Winding Thermal 2:</b>	None

<b>Nameplate NP1256L</b>										
<b>CAT.NO.</b>	M1707T									
<b>SPEC.</b>	36A01W675									
<b>HP</b>	3/1.5									
<b>VOLTS</b>	460									
<b>AMP</b>	4.2/4.4									
<b>RPM</b>	1725/850									
<b>FRAME</b>	184T				<b>HZ</b>	60			<b>PH</b>	3
<b>SER.F.</b>	1.15		<b>CODE</b>	K	<b>DES</b>	-		<b>CLASS</b>	F	
<b>NEMA-NOM-EFF</b>			<b>PF</b>							
<b>RATING</b>	40C AMB-CONT									
<b>CC</b>									<b>USABLE AT 208V</b>	
<b>DE</b>	6206				<b>ODE</b>	6205				
<b>ENCL</b>	TEFC		<b>SN</b>							

Parts List		
Part Number	Description	Quantity
SA033901	SA 36A01W675	1.000 EA
RA029929	RA 36A01W675	1.000 EA
36CB3004	36 CB CASTING W/1.09 DIA LEAD HOLE @ 6:0	1.000 EA
36GS1000SP	GASKET-CONDUIT BOX, .06 THICK #SV-330 LE	1.000 EA
51XB1016A08	10-16X 1/2HXWSSLD SERTYB	2.000 EA
11XW1032G06	10-32 X .38, TAPTITE II, HEX WSHR SLTD U	1.000 EA
HW3001B01	BRASS CUP WASHER, FOR #10 SCREW	1.000 EA
36EP3104A01	FREP MACH ASSEMBLY FOR ROUTING	1.000 EA
HW4500A01	1641B(ALEMITE)400 UNIV, GREASE FITT	1.000 EA
HW5100A05	WVY WSHR F/205 & 304 BRGS	1.000 EA
36EP3100A01SP	PUEP ASSEMBLY FOR ROUTING PURPOSES	1.000 EA
HW4500A01	1641B(ALEMITE)400 UNIV, GREASE FITT	1.000 EA
XY2520A12	1/4-20 HEX NUT, DIRECTIONAL SERRATIONS	4.000 EA
51XB1214A16	12-14X1.00 HXWSSLD SERTYB	1.000 EA
36FH4009A102	IEC FH GREASER PRIMED	1.000 EA
51XW1032A06	10-32 X .38, TAPTITE II, HEX WSHR SLTD S	3.000 EA
36CB4516	36 LIPPED CB LID - GALVANNEAL	1.000 EA
37GS1001SP	GASKET, CONDUIT BOX LID, .06 THICK LEXID	1.000 EA
51XW0832A07	8-32 X .44, TAPTITE II, HEX WSHR SLTD SE	4.000 EA
HW2501E16	KEY, 1/4 SQ X 1.750	1.000 EA
HA7000A02	KEY RETAINER RING, 1 1/8 DIA, 1 3/8 DIA	1.000 EA
85XU0407S04	4X1/4 U DRIVE PIN STAINLESS	2.000 EA
HW3200A01	3/8-16X3/4 I-BLT WELDED F/S	1.000 EA
MJ1000A02	GREASE, MOBIL POLYREX EM - 124047	0.050 LB

<b>Parts List (continued)</b>		
<b>Part Number</b>	<b>Description</b>	<b>Quantity</b>
36FN3000A01SP	EXFN, PLASTIC, 7.00 OD, .912 ID	1.000 EA
MG1000G27	MED CHARCOAL METALLIC GREY 400-0096	0.022 GA
LB1115N	LABEL,LIFTING DEVICE (ON ROLLS)	1.000 EA
HA3101A28	THRUBOLT 1/4-20 X 12.500 OHIO ROD	4.000 EA
LB1119N	WARNING LABEL	1.000 EA
LC0032	CONNECTION LABEL	1.000 EA
NP1256L	ALUM UL CSA CC INDUSTRIAL MOTOR A60	1.000 EA
G0PA1000	PKG GRP, PRINT PK1026A06	1.000 EA
MN416A01	TAG-INSTAL-MAINT no wire (1200/bx) 3/19	1.000 EA

<b>Accessories</b>		
<b>Part Number</b>	<b>Description</b>	<b>Multiplier</b>
36-3301	C FACE KIT	A8
36EP1304A62SP	FLANGE MTD ENDPLATE 182-4TD -ENCL (LESS	A8

**AC Induction Motor Performance Data**

Record # 10816 - Typical performance - not guaranteed values

<b>Winding:</b> 36WGW675-R001	<b>Type:</b> 3640M	<b>Enclosure:</b> TEFC
-------------------------------	--------------------	------------------------

Nameplate Data				460 V, 60 Hz: High Speed Connection	
Rated Output (HP)	3/1.5			Full Load Torque	9.1 LB-FT
Volts	460			Start Configuration	direct on line
Full Load Amps	4.2/4.4			Breakdown Torque	32 LB-FT
R.P.M.	1725/850			Pull-up Torque	20 LB-FT
Hz	60	Phase	3	Locked-rotor Torque	31.5 LB-FT
NEMA Design Code	B	KVA Code	K	Starting Current	32.7 A
Service Factor (S.F.)	1.15			No-load Current	1.8 A
NEMA Nom. Eff.	0	Power Factor	0	Line-line Res. @ 25°C	6.13 Ω
Rating - Duty	40C AMB-CONT			Temp. Rise @ Rated Load	70°C
S.F. Amps				Temp. Rise @ S.F. Load	83°C

Load Characteristics 460 V, 60 Hz, 3 HP

% of Rated Load	25	50	75	100	125	150	S.F.
Power Factor	49	68	78	84	87	89	86
Efficiency	74.1	81.5	82.9	82.3	80.9	78.5	81.5
Speed	1787	1772	1759	1742	1725	1702	1732
Line amperes	2.1	2.7	3.3	4.2	5	6	4.68

Performance Graph at 460V, 60Hz, 3.0HP Typical performance - Not guaranteed values

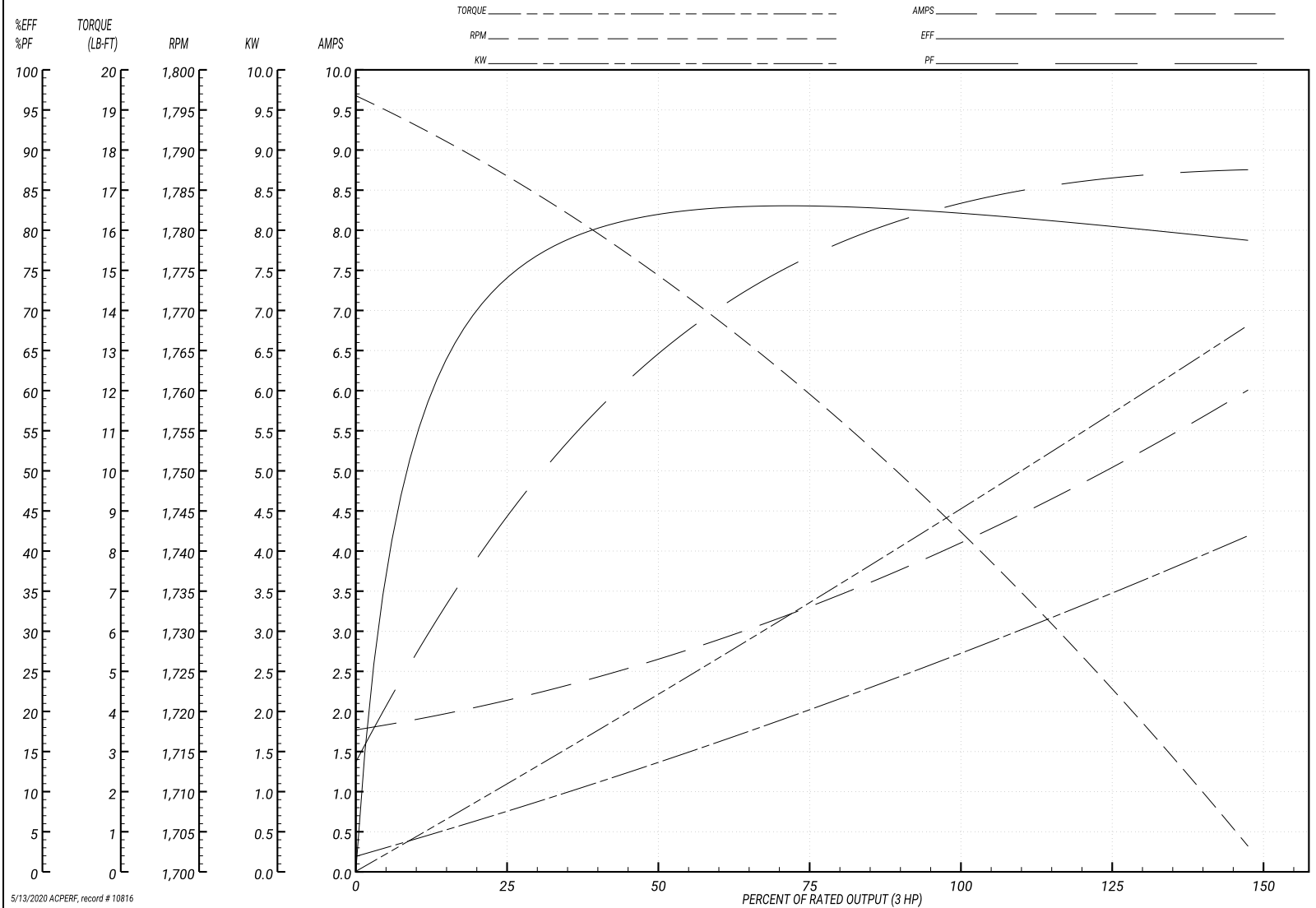
ABB Motors and Mechanical Inc.

WINDING # 36WGW675

Typical performance - not guaranteed values.

3 HP 3 PH 60 HZ 1742 RPM 460 V 3640M

TORQUES(LB-FT): PO=32 PU=20 LR=31.5 LRA=32.7



5/13/2020 ACPERF, record # 10816

**AC Induction Motor Performance Data**

Record # 10817 - Typical performance - not guaranteed values

<b>Winding:</b> 36WGW675-R001	<b>Type:</b> 3640M	<b>Enclosure:</b> TEFC
-------------------------------	--------------------	------------------------

Nameplate Data				460 V, 60 Hz: Low Speed Connection	
Rated Output (HP)	3/1.5			Full Load Torque	9.1 LB-FT
Volts	460			Start Configuration	direct on line
Full Load Amps	4.2/4.4			Breakdown Torque	36 LB-FT
R.P.M.	1725/850			Pull-up Torque	29 LB-FT
Hz	60	Phase	3	Locked-rotor Torque	31.1 LB-FT
NEMA Design Code	B	KVA Code	K	Starting Current	19.1 A
Service Factor (S.F.)	1.15			No-load Current	3.7 A
NEMA Nom. Eff.	0	Power Factor	0	Line-line Res. @ 25°C	8.34 Ω
Rating - Duty	40C AMB-CONT			Temp. Rise @ Rated Load	89°C
S.F. Amps				Temp. Rise @ S.F. Load	98°C

Load Characteristics 460 V, 60 Hz, 1.5 HP

% of Rated Load	25	50	75	100	125	150	S.F.
Power Factor	22	33	42	51	57	63	55
Efficiency	48.5	64.2	70.2	72.8	73.6	73.3	73.3
Speed	892	883	876	866	856	845	860
Line amperes	3.8	3.9	4.2	4.4	4.7	5.2	4.6

Performance Graph at 460V, 60Hz, 1.5HP Typical performance - Not guaranteed values

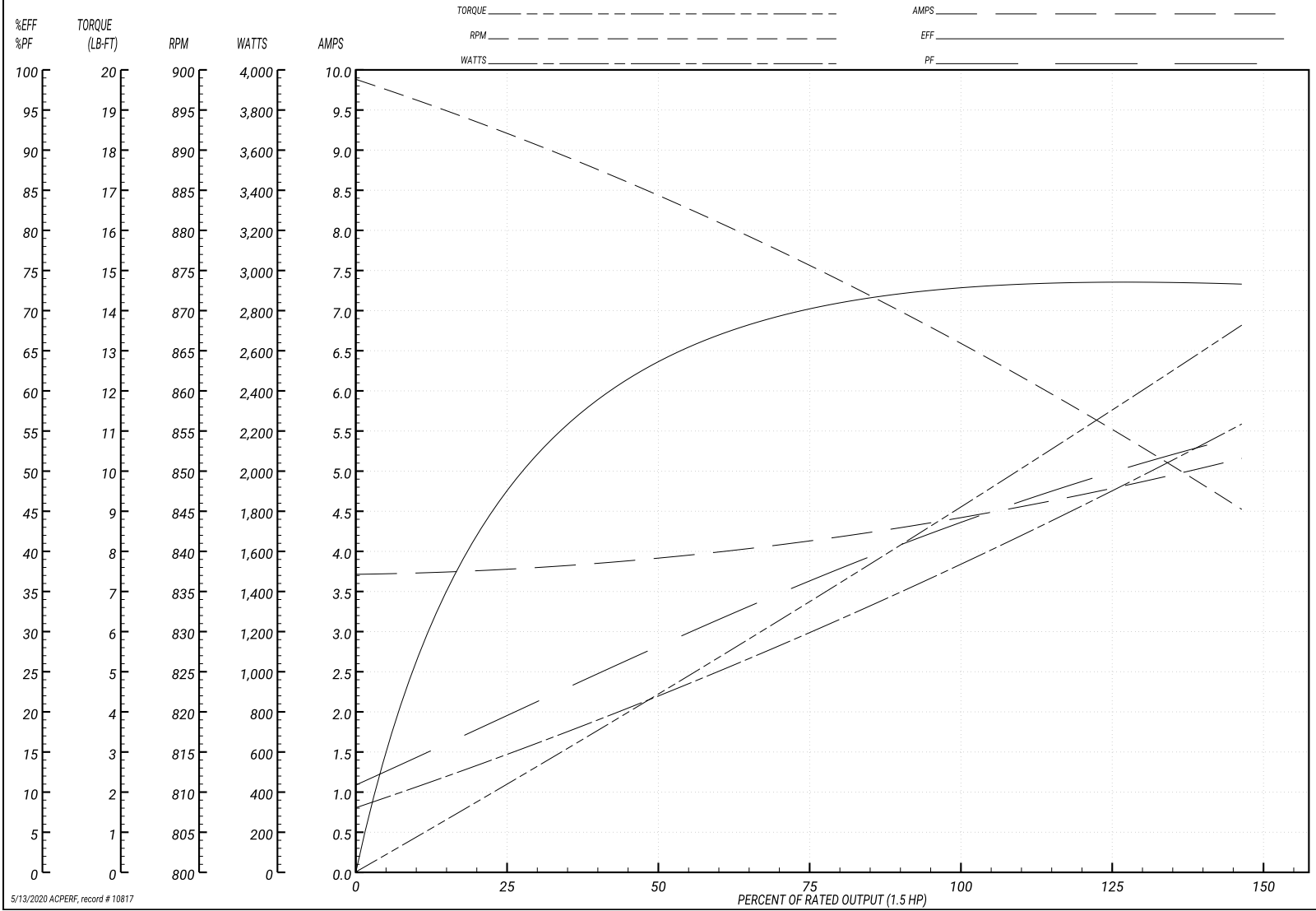
ABB Motors and Mechanical Inc.

WINDING # 36WG675

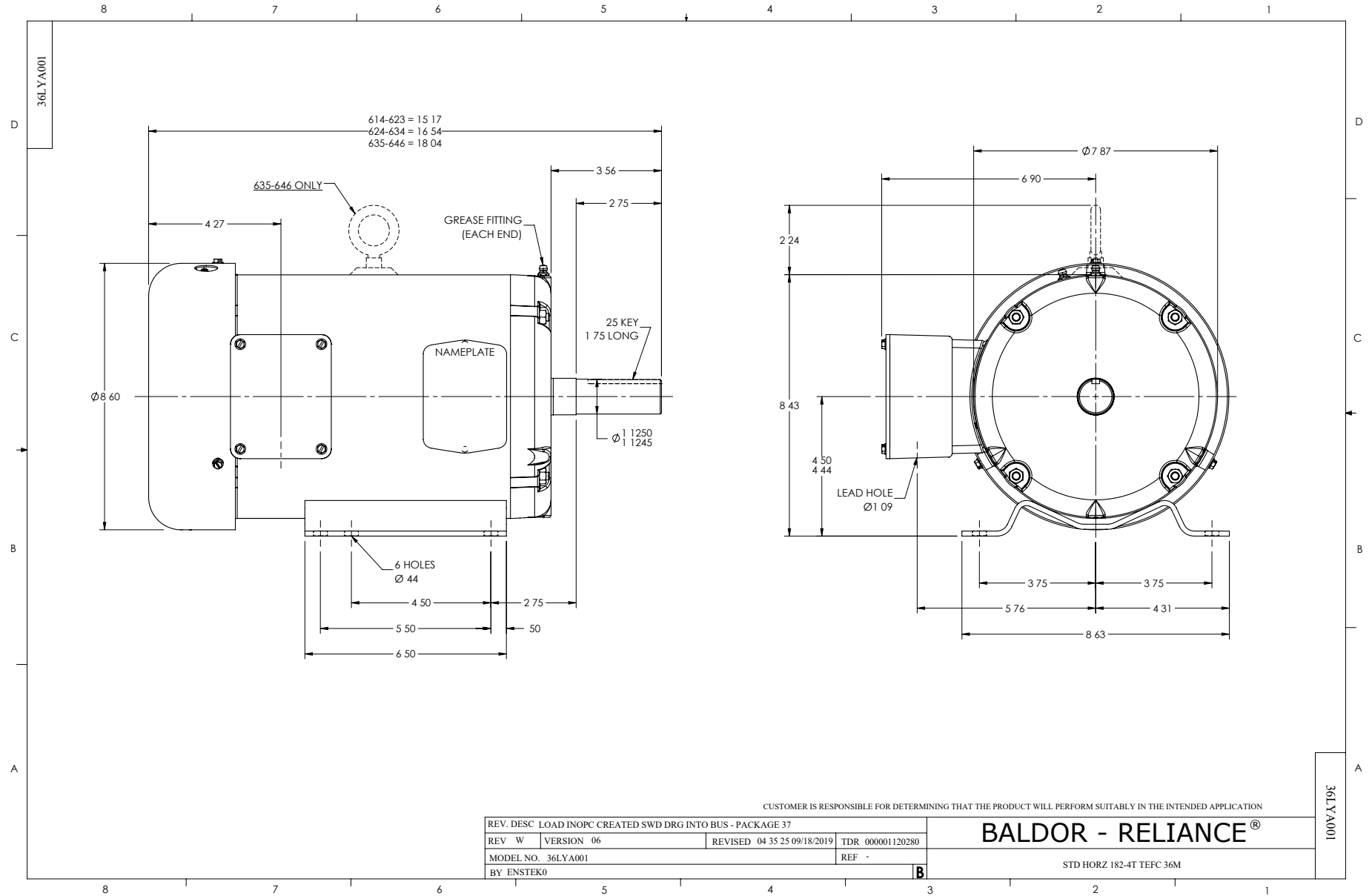
Typical performance - not guaranteed values.

1.5 HP 3 PH 60 HZ 866 RPM 460 V 3640M

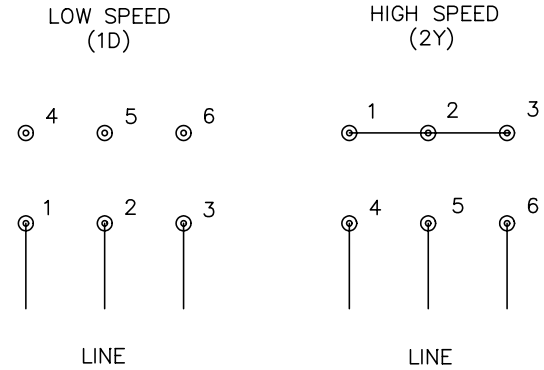
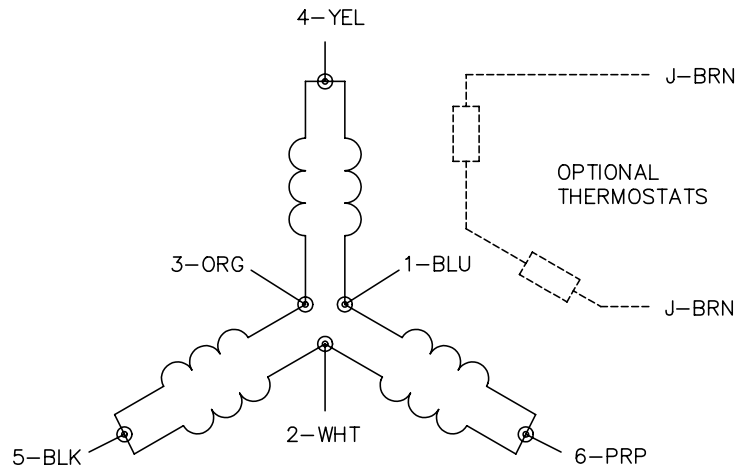
TORQUES(LB-FT): PO=36 PU=29 LR=31.1 LRA=19.1



5/13/2020 ACPERF, record # 10817



CD0011



NOTES:

1. INTERCHANGE ANY TWO LINE LEADS TO REVERSE ROTATION.
2. OPTIONAL THERMOSTATS ARE PROVIDED WHEN SPECIFIED.
3. ACTUAL NUMBER OF INTERNAL PARALLEL CIRCUITS MAY BE A MULTIPLE OF THOSE SHOWN ABOVE.
4. LEAD COLORS ARE OPTIONAL. LEADS MUST ALWAYS BE NUMBERED AS SHOWN.

REV. DESC: REVISE TO SHOW OPTIONAL COLORS			
REV. LTR: F	BY: JLP	REVISED: 01/21/99 5:04	TDR: 0171435
110000		FILE: DWG\142.wg	MDL: -
		MTL: -	

**BALDOR ELECTRIC Co.**

3PH, SV, 6 LEADS, 2-SPEED 1-WINDING CONSTANT TORQUE

CD0011